

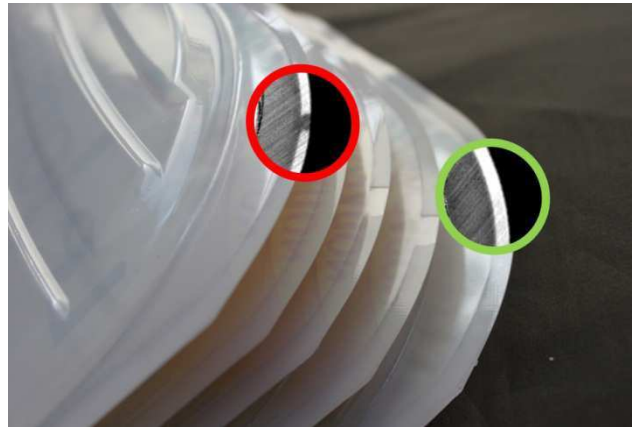
Innovation

VISION CONTROL OF FOOD PACKAGING: LUCEO CONSOLIDATES ITS TECHNOLOGICAL ADVANCE IN OPTICAL DETECTION WITH A NEW GENERATION OF SENSORS

At the INTERPACK trade fair, Luceo Inspection Worldwide will present the latest major development of its ThermoSecure offering for the control of sealed packaging: a unique image acquisition and software processing system detects all types of defects in the sealing zone and reacts in real time to any sealing tool drift.

Highlight the entire seal cavity, with unrivalled contrast quality

The new smart electro-optical system developed and patented at the end of 2013 by Luceo can be used to perfectly create the entire sealing seam. The contrast quality obtained by this system very clearly renders all the defects in the sealing zone : lack of sealant, bubbles, folds, broken tray, presence of contaminant, etc.



Easily interpretable images to make detecting defects more reliable

A perfectly contrasted image, which shows the sealing seam in white and all the sealing defects in black, means that interpreting data is both simpler and more reliable. This allows the control unit to work at higher rates with a minimum margin of error.

Real-time control of sealing tool drift

Another function provided by the new generation of Luceo sensors is real-time control of the sealing seam width and detection of any shrinkage that is too great, related to sealing tool drift. In this specific case, the control unit is also able to generate a process alert that allows the operator to act in real time to correct the problem and thus anticipate the appearance of defective sealing.

The new generation of sensors will be presented on the Luceo stand:

Hall 5 - Stand E26